

Advent

Worship Schedule:

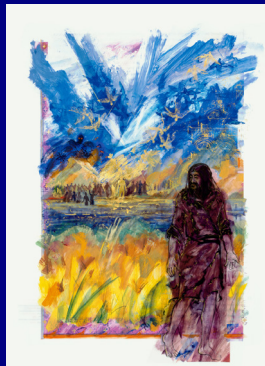
- Saturday 5:30 p.m.
- Sunday 8:00 a.m.
 - Sunday School 9:00 a.m.
 - CrossTalk 9:10 a.m.
- Sunday 10:00 a.m.
- Staffed Nursery during both Sunday worship services
- Wednesday Advent
 - 12:00 & 6:00 p.m.
 - Meals: 12:30 & 5:00 p.m.

Worship Broadcast Schedule:

- TV Channels 67, 97 & 992 (Depending on your cable provider): Sunday 11:00 a.m. & 7:00 p.m. and Thursday 7:00 p.m.
- Radio: WJMC 96.1 FM & 1240 AM: Sunday 8:00 a.m. live
- Live Streaming: www.bethanyricelake.org Sunday 10:00 a.m. live
View archives anytime

Worship News:

“Danger, Warning, Love’ - the song of John the Baptist”



Luke 1: 46-55

John the Baptist heralds the mighty one “who is coming.” John teaches that preparation for God’s reign is not a matter of identity but of bearing fruits of merciful justice, radical generosity, and vocational integrity.

THE WEEK AHEAD



We **INVITE** all;
We **GROW** in faith;
We **GO** to share God’s love and grace.

December 16 - 22, 2018



GOD PAUSE

Luke 3:7-18

If Advent is about renewal, then--as this text about John the Baptist makes clear--it is also about repentance. Centuries later, John’s calls to repent still resound. We are the crowds he calls a “brood of vipers.” We are the ones he tells to flee from the wrath to come, because of the havoc we wreak on our relationships and communities. We are the ones whose presumptions to privilege he questions. As he warns, trees that do not bear good fruit will be axed. All that cannot tolerate the light of truth and justice will ultimately dissolve.

What then should we do? Share our excess clothes and food. Only take what we need. Avoid extorting money -- or anything else that is not ours -- with threats and accusations. Repentance means changing our lifestyle. It means measuring our use of wealth, power and privilege against God’s -- and not this world’s -- standards of truth and justice.

O God, give us power to repent. Help us see the chaos we wreak when we misuse the wealth, power and privilege you have given us. Amen.

Lois Malcolm, ‘89

Professor of Systematic Theology, Luther Seminary, St. Paul, Minn.

Christmas at Bethany Lutheran Church

Christmas Eve, December 24: Services at 1:00 p.m., 3:00 p.m. & *5:00 p.m.

*Broadcast live on WJMC Radio FM 96.1 & AM 1240

Staffed Nursery: All Christmas Eve services

Christmas Day, December 25: Service at 11:00 a.m.

Christmas Day Dinner: 12:00 p.m. in Fellowship Hall

Worship Assistants:

Saturday, December 15, 2018

5:30 p.m.

- Host/Hostess ~ Barb Goffin
- Projection ~ Brenda Kretzschmar
- Song Leader ~ Paul Hanson
- Piano ~ Tammy Roberg

Sunday, December 16, 2018

Assisting Minister ~ Carol Sevals

8:00 a.m.

- Greeters ~ Shirley Peterson (M) and Gary & Karen Chilson (N)
- Ushers ~ John & Nancy Kann
- Communion Assistants ~ Gary & Karen Chilson and Shirley Peterson
- Reader ~ Brad Wiedmann
- Acolytes ~ Keira Miller and Samantha Miller
- Organ ~ Susan Barta
- Projection ~ Peggy Norton
- Media ~ Wayne Arntson

10:00 a.m.

- Greeters ~ Diana Halvorson (M) and Kevin & Rena Einum (N)
- Acolytes ~ Evan Rindsig and Easton Stone
- Projection ~ Jan Wilking
- Media ~ Dave Wilson
- Bus Driver ~ Craig Antonson
- Bus Aid ~ Joan Bird

Thank you for volunteering!

Worship Assistants are needed each week-end to make sure our worship services go smoothly. If you are able to help out, please call Leah Hullinger at 715-234-9028.



Jesus Christ is Born!

A Bethlehem Christmas

Sunday, December 16, 2018 - 4:30 p.m.

Open to the whole community!

A reception will follow the concert.

Please remember to turn in your Commitment Cards.

We appreciate your willingness to estimate your giving for next year, as our ministry budget is based in large part upon what church members intend to give.

Are you interested in learning more about or setting up online giving? Call the office at 715-234-9028 and we will answer your questions and get you set up.

Thank you for your participation in & support of the life & mission of Bethany Lutheran!

Christmas Day Dinner

December 25, 2018

Helpers are needed for pie donations, food preparation, serving an amazing Christmas dinner and clean-up. If interested, please sign up in the Narthex or call the church office at 715-234-9028.

Worship Assistants Needed

Bethany is in need of volunteers to assist with worship during the three Christmas Eve services and one Christmas Day service. If you are able to help, please sign up in the Narthex. If you have questions, please contact the office at 715-234-9028.

NOISY COLLECTION

Watch for the Noisy Collection in December!

Save your noisy money as well as the "silent" stuff!

Donations will be going to Bethany's Good Samaritan Fund.

Stock Contributors ~ Please notify the church office if you donated stock to Bethany in 2018 and haven't already told us. When we receive stock in the mail, the donor is anonymous so we can't give proper credit on contribution statements.

Year End Contributions ~ Bethany will close its books for receiving 2018 contributions on December 31. Offerings postmarked no later than December 31 and received no later than Thursday, January 3 will be credited as 2018 contributions.

involved
unteer

Bethany Lutheran Church
A Congregation of the Evangelical
Lutheran Church in America

35 W. Messenger Street
Rice Lake, WI 54868

Phone:
(715) 234-9028

Fax:
(715) 234-9029

Email: bethany@chibardun.net

Website & Calendar:
www.bethanyricelake.org

VISIT OUR
WEBSITE 

Facebook:
Bethany Lutheran - Rice Lake, WI



Instagram:
#bethanylutheranrl

Office Hours:

- Monday - Thursday ~
8:00 a.m. - 5:00 p.m.
- Friday ~ 8:00 a.m. - 4:00 p.m.



Mission Jamaica 2nd Suitcase Donations

It's time to help fill those precious second suitcases again for the team to take along to Jamaica in January. Our real need this year is CASH to replace old, non-working refrigerators and to help defray the cost to get 2nd Suitcases to Jamaica on SunCountry Airlines at \$25 a piece. There will be a small display in the Narthex. Check it out for ways to help or talk to Dave or Lenae Sovacool for questions! Thanks ahead! Bethany's support is amazing each year!

Special Envelopes

The special Advent / Christmas envelope packets are available for pick up. They are located next to the generic offering envelopes in the Narthex.

Name Tag Order: Bethany will be placing another name tag order before the end of the year. Any members who have not yet received a name tag and would like one, please contact the office.

The Week Ahead • December 16 - 22, 2018

Sunday 16 8:00 AM Worship
10:00 AM Worship
4:30 PM Bethany Christmas Concert/SA

Monday 17 8:30 AM Staff Meeting/YR
9:30 AM Adult Bible Study/CR
4:30 PM Mission Concerns/105
5:30 PM Council/CR

Tuesday 18 8:00 AM Men's Bible Study/CR
8:00 AM Bethany Belles
10 AM-12 PM Bandage Prep/QR
12:00-1:00 PM Lunch Box/FH
1:30 PM Hannah Circle/CR
6:30 PM Library/LI

Wednesday 19 12:00 PM Worship
12:30 PM Advent Meal/FH
3:30-4:00 PM Learn-to-Ring Chimes
4:00-4:40 PM 6th-8th Grade Bells
5:00-5:45 PM Supper/FH
5:30-6:30 PM Vesper Bells
6:00 PM Worship
6:30 PM Bethany Choir
7:00 PM Rise Up!/SA
7:30 PM HS Youth Group/YR

Thursday 20 11:15 AM Heritage Lakeside Communion Service
1:00 PM Brentwood Communion Service
5:30 PM Welcome Team/CR

Friday 21 7:00 AM Men of Bethany at Maxine's
7:30 AM Praise! Team Rehearsal/SA

Saturday 22 5:30 PM Worship

Main Level: CR-Conference Room GR-Gathering Room LI-Library NA-Narthex
SA-Sanctuary NS-Nursery **Lower Level:** LL-Luther Lecture FH-Fellowship Hall
QR-Quilting Room YR-Youth Room **Upper Level:** 3F-3rd Floor